



SOUTH ISLAY NEWS

Oct 2023

SONAS CHILDCARE & RAMSAY HALL UPDATE

FOLLOWING COMMUNITY FEEDBACK & AN EXCITING NEW FUNDING OPPORTUNITY FROM HIE FOR A PURPOSE-BUILT CHILDCARE FACILITY PLANS HAVE BEEN AMENDED

Following the recent community consultation about the Ramsay Hall, the SID board and staff have reviewed the community's aspirations and how best they can be met within the wider scope of The Playing Fields. The Sonas Steering Group (Mums and childcare providers) also met with SID in order to discuss the main topics with regards:

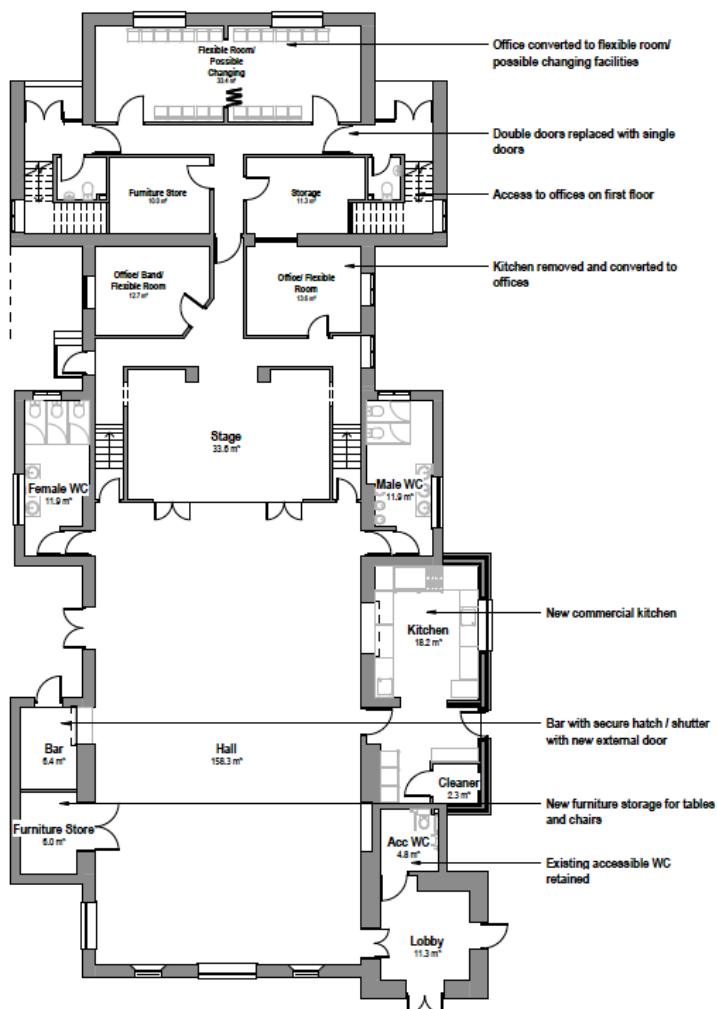
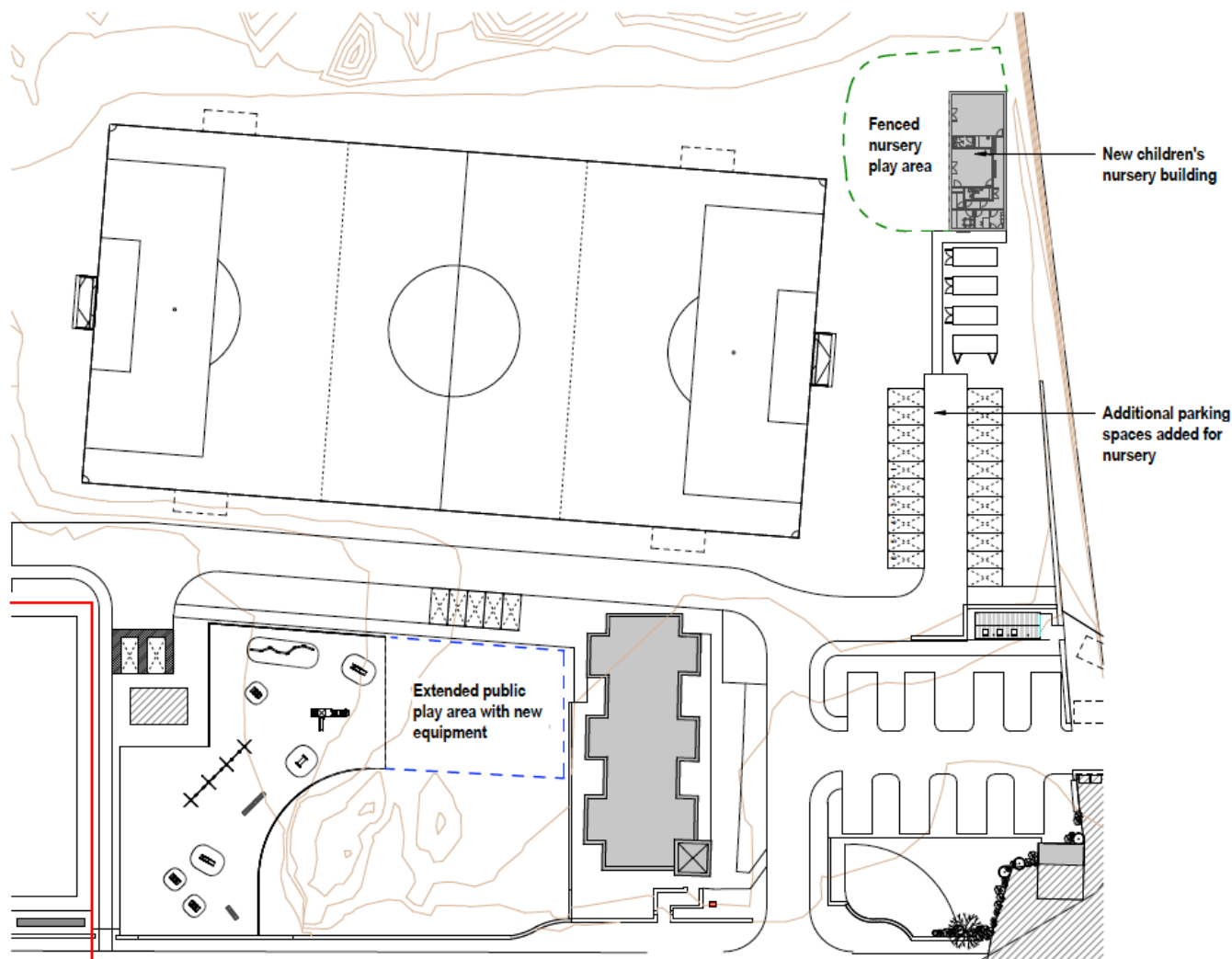
CHANGING ROOMS SMALL FUNCTION ROOM CHILDCARE FACILITY

UPGRADED ACCESSIBLE FACILITIES IN THE HALL

The SID Board have pledged to work towards:-

- The completion of a lease agreement for The Ramsay Hall with Argyll & Bute Council meaning the management of the Hall will be run locally once again.
- Pursuing new childcare facilities on the Playing Fields site in line with recent Scottish Government guidelines.
- New upgraded facilities in the main hall which are accessible to all.
- A multi-purpose accessible space downstairs in The Ramsay Hall which is available to hire for changing rooms or functions.
- Dedicated storage for the main users - Port Ellen Juniors and Mother & Toddlers.
- New office or storage rooms for hire in The Ramsay Hall.
- Increasing the dedicated space for the play park and adding more equipment as funding becomes available.

The plan shows the new location of a potential new childcare/nursery building on The Playing Fields which has its own dedicated site and parking. This will complement the potential Ramsay Hall upgrade for large functions/sports/events and the Community Hub building with its café, local businesses and small function room.



BRUACH
ARCHITECTS

BRUACH
ARCHITECTS

The Next Steps:-

- Finalise the plans and submit planning permission with Argyll & Bute Council;
- Continue to finalise the heads of terms for The Ramsay Hall lease with Argyll & Bute Council;
- Continue to apply and secure funding towards the projects on the plan;
- Continue to work closely with all the groups involved.

Copies of the Updated Plans are available in local shops, at the SID Office or online at www.southislay.co.uk

Port Ellen Playing Fields Construction Update

Construction is ongoing at the Playing Fields despite the weather! There have been a few delays including some flooding; however, SID's civil engineer has now increased and improved the planned surface water drainage on site, which should get rid of the bigger puddles. The steel frame for the building is expected to arrive soon and at this point visible progress should be quick!

The ground is also being levelled for the construction of the motorhome expansion, and the W/C, shower & laundry block. This has involved moving a lot of soil and piling it at the back of the football pitch. Please don't worry as this will be dealt with as the construction progresses.



Architect visualisations of the inside of the new Pavilion

Thank you again for all your support and patience while the work is undertaken, especially given part of the playpark was closed earlier than anticipated. Please be aware of construction traffic and note there is still no parking on the Playing Fields. If there are any questions don't hesitate to get in touch with Rosie at portellenplayingfields@gmail.com.

PORT ELLEN FILLING STATION

** VACANCY **

Port Ellen Filling Station is recruiting a **Filling Station Supervisor**

to become part of the small community-owned Filling Station in Port Ellen

The Filling Station Supervisor will oversee and attend to the daily running of the Filling Station, serving customers, ordering fuel and cashing up daily.

The mobile home service point brings in regular business by checking in customers and taking money for the disposal services, jet wash and air compressor, all these services are managed from within the Filling Station Shop.

As part of a small team, we are looking for an adaptable and organised individual with an appetite for change who is highly motivated and able to work on their initiative.

Filling Station Supervisor - 24 hours a week @ £13.10 per hour

(Comprising of 20 hours in the Filling Station alongside 4 hours office-based a week.)

The hours are negotiable and open to job sharing if suitable.

Port Ellen Filling Station Supports The Living Wage.

The positions are available for an immediate start.

For further details of the position,
please contact: southislaydevelopment@gmail.com or Call: 01496 300 579



Upcoming Events



Upcoming Events October - December

OCTOBER

Tuesday 3rd Oct - Tuesday 14th Nov
Move it or Lose it - 2:30 pm- 3:30 pm

Saturday 28th - Halloween Junior Disco- 6 pm-8 pm
Saturday 28th - Halloween Adults Disco - 10 pm-1 am

NOVEMBER

Saturday 4th - Firework Display- 7pm-9pm
Sunday 26th - Christmas Market Fair - 12pm-3pm
Thursday 30th - St Andrew's Ceilidh - 2pm-4pm

DECEMBER

Saturday 2nd - Port Ellen, Xmas Light Switch On - 5pm
Friday 15th - Lunch Club Christmas Tea - 12pm

For more info on any of these events email
Danielle - sidcommunityengagement@gmail.com



Lunch Club On The Move!

From April- October every Wednesday the Lunch Club has been to every corner of the island, visiting lots of great places Islay has to offer.

We enjoyed our last outing to Jura on 11th October. Returning to Sea Salt on 25th October for the winter.

I would like to give a heartfelt Thank You to each and every one of you for attending. Was the highlight of our week, making lots of memories to share with others.

Pop in and see us!

The SID Office is OPEN!
**Office located at the rear entrance
of The Ramsay Hall.**

Alyson MacGillivray - SID Development Manager
Kirsty Izat - SID Assistant Development Manager
Rosie MacLellan - PEPF Project Manager
Danielle McKerrell - Community Engagement Officer

Monday to Thursday 9 am – 4 pm

Friday 9:30 am – 2 pm

These hours may be subject to change.

If the office is closed when you visit, please call or email:

Call SID Office: 01496 300 579 and leave a message.

Email Alyson: southislaydevelopment@gmail.com

Email Kirsty: sidassistantmanager@gmail.com

Email Rosie: portellenplayingfields@gmail.com

Email Danielle: sidcommunityengagement@gmail.com

Get to know your SID and SITCo Directors:

Patrick McGrann - Director/Chair
James McFarlane - Director/Vice Chair

Dionne Johnston - Director
Jackie Thomson - Director
Jim Porteous - Director
Alex Gillespie - Director
Jordon Paisley - Director
Rosie Gordon - Director

Gordon Currie - SID/SITCo Director
Ian Faggetter - SID/SITCo Director
John Findlay - SID/SITCo Director
Niall Kirkpatrick - SITCo Director
Frazer Campbell - SITCo Director

